

Installation Guide

Version 2.50

This document details the instructions for setting up the Hughes riskApps™ software. You should follow this document in the same order when installing each component.

What you should know before getting started:

1. Downloaded the three Hughes Risk Apps components from <http://www.hughesriskapps.net/products.aspx>. These are the database, clinician application and tablet application (see the left column on this page for download links).
2. You should have Microsoft SQL Server 2005 or Microsoft SQL Server Express 2005. NOTE: You may also use Microsoft SQL Server 2008 or Microsoft SQL Server Express 2008, all available at <http://www.microsoft.com/sqlserver/>.
3. You should have a server for Microsoft SQL Server or at minimum a desktop that will run the Express version.
4. You should have a dedicated desktop if you intend to run automation with the Net 2.0 Framework. NOTE: The Hughes riskApps™ setup program will download and install the .Net 2.0 framework if it is not on your desktops.
5. You should have desktops that have a minimum of 2 GIGs of RAM and the .Net 2.0 Framework for using the Clinician/Management application. This is the application that clinicians will use to interact with the patient and family history data. NOTE: The Hughes riskApps™ setup program will download and install the .Net 2.0 framework if it is not on your desktops.
6. You should have tablet computers that your patients will use for providing survey data. These should be as light as possible. NOTE: We like the Motion tablets and the Lenovo X200.
7. If you will be using tablets, you will want to ensure that that area where the tablets will be used has sufficient wireless coverage so that the tablets can communicate with the backend database. NOTE: You may also run the tablet application on a hard wired desktop or a hard wired tablet.

Minimum Requirements

1. A server running Microsoft SQL Server 2005 or 2008.
This should have a minimum of 4 gigs of RAM and Windows 2003 Server with all service packs and packages including your corporate approved anti-virus software. We typically suggest the OS on the C: drive, the SQL install on a D: drive and your data and log files on an E: drive or some other drive.
2. Desktops should be your approved and provisioned desktops from your IT department. They should have a minimum of:
 - a. 2 GIGs of RAM;
 - b. a minimum of 225 MB of space for the Hughes riskApps™ installation;
 - c. .Net 2.0 framework;
 - d. your institutions approved virus protection software.
 - e. Windows XP or Windows Vista (32 bit) with all of the latest service packs and patches;
 - f. Microsoft Office 2003 or 2007 with the latest service packs and patches;NOTE: Microsoft Word, Excel and Access are required in Version 2.50.
3. Your Tablets should:

Copyright @ 2005 - 2009 Hughes Risk Apps. All Rights Reserved.

Any dissemination or alteration of this of this document or material, either in paper, electronically or through a digital system without the prior written consent of the copyright holder is strictly prohibited.

hughes riskApps™

- a. optionally have wireless;
- b. Microsoft Access 2003 or 2007;
- c. .Net 2.0 framework;
- d. Windows XP or Vista (32 bit) with all of the latest service packs and patches.
Your institutions approved virus protection software.

Installation

1. Database

The first component you will install is the database component. Before you can install the Hughes riskApps™ database component, you must have already installed Microsoft SQL Server 2005 on a server or installed Microsoft SQL Server Express 2005 on a desktop computer. You must also ensure, using the Microsoft *SQL Server Surface Area Configuration* tool that is installed as part of a Microsoft SQL Server 2005 installation, that your SQL Server installation will accept both local and remote connections.

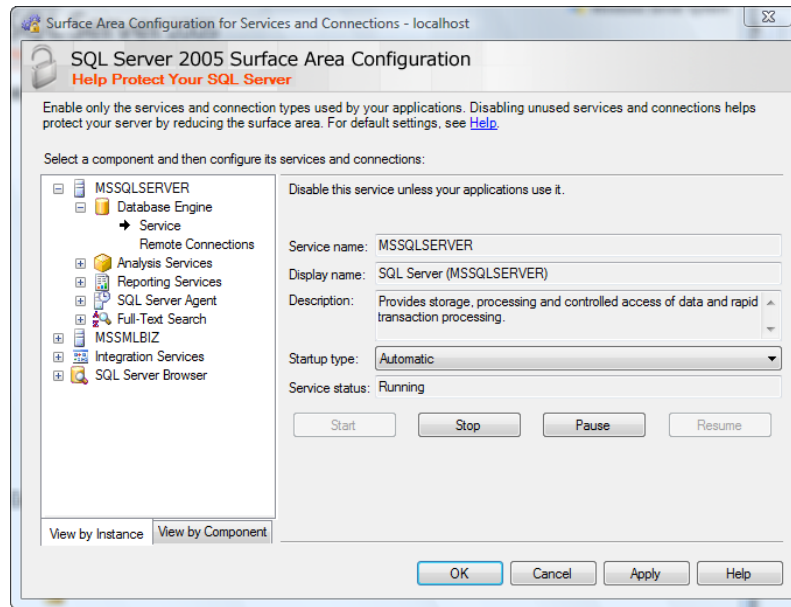
Microsoft SQL Server Express 2005 is available as free download from

<http://www.microsoft.com/http://www.microsoft.com/express/sql/previous/register.aspx>. NOTE: you may use Microsoft SQL Server 2008 or Microsoft SQL Server Express 2008.

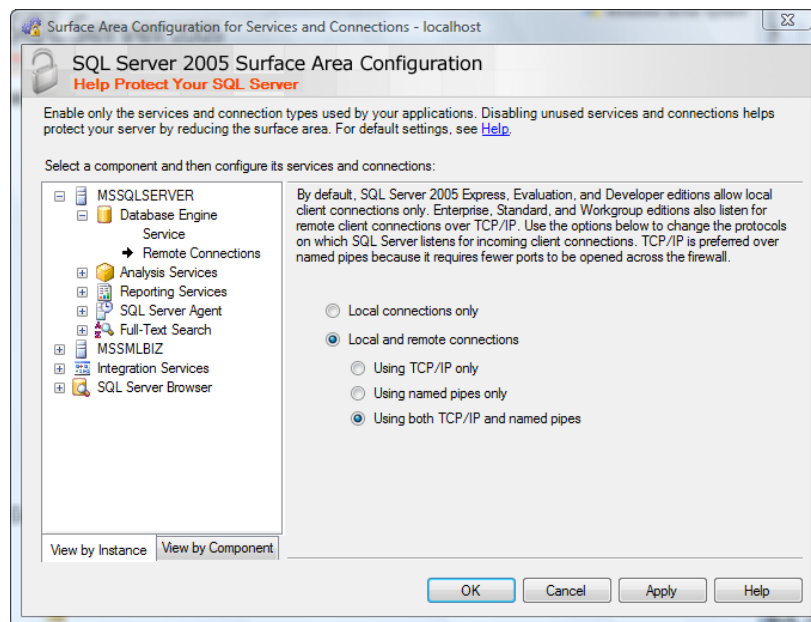
- i. If you have not yet installed *Microsoft SQL Server 2005* or *Microsoft SQL Server Express 2005* please do so now;
- ii. Using the Microsoft SQL Server Surface Area Configuration tool to enable both local and remote connections:
 - i. Start up the configuration tool – you will see this screen:



- ii. Click the last link on this screen title *Surface Area Configuration for Services and Connections*. You will see this screen:

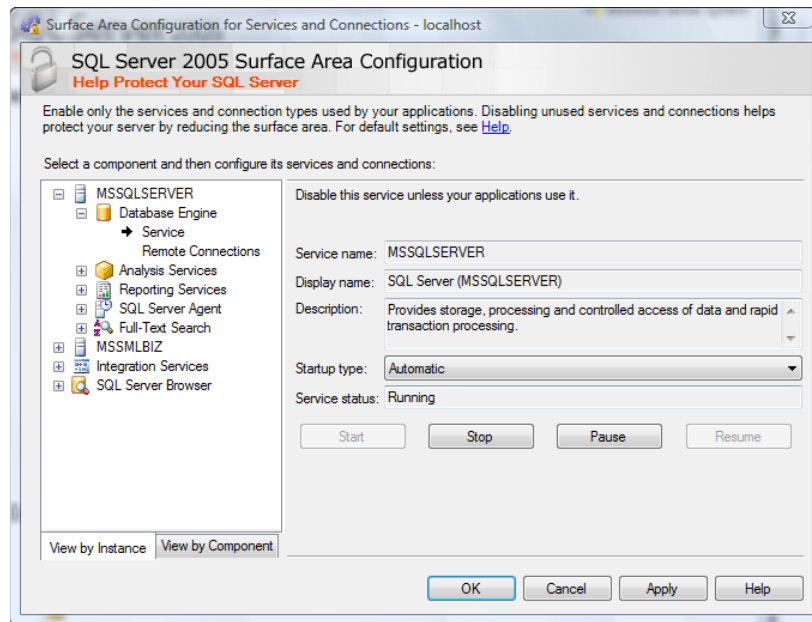


iii. Under *Database Engine* in the tree of icons on the left, click the *Remote Connections* item. You will see this screen:



- iv. Make sure that the radio buttons next to *Local and remote connections* and *Using both TCP/IP and named pipes* are selected.
- v. Click the *Apply* button to save your changes.

- vi. Click on *Service* in the tree of icons on the left. You will see this screen:



- vii. Click the *Stop* button to stop the service. The service will stop after 30 seconds to a minute.
- viii. Click the *Start* button which should not be enabled. This will start the service again with the new options.
- ix. Click OK to exist this screen.
- x. Use the *X* in the upper right corner of the surface configuration tool to exist out.

You are now ready to install the Hughes riskApps™ Database component.

- iii. You should be physically at the machine where you have installed the Microsoft SQL Server. If you are IT administrator you may remote into your SQL Server machine, but ensure that the Hughes riskApps™ database install software is accessible either on that machine or over your network.
- iv. Double-click the riskApps_250_Database_Setup.exe file. The install will start.
- v. The files will be installed to c:\program files\riskappsV2\database\.
- vi. The database will be attached to the default SQL instance on the server.
- vii.** The install application will then create a default user for the bcDB2 database.

You may now proceed to install the clinic/management application on your desktops

2. Clinician/Management Application

At each desktop, you will need to run the riskApps_250_Management_App_Setup.exe install file.

- i. The install will ask you 3 questions:
 - i. Your Clinic Name
 - ii. Your SQL Server Name
 - iii. Your Database Name
- ii. Please provide answers to each question. If you have not renamed your database, please enter **bcDB2** for this value.
- iii. The installation will proceed.
- iv. If the .Net 2.0 framework is not on the desktop, the installation program will prompt you to download and install it prior to installing Hughes riskApps™.
- v. Once the installation is complete, test accessing the application. Login with:

Username: admin

Password: admin

You may opt to integrate the Hughes riskApps™ installation into your institutions install/SMS system. To do this, you should setup your server as above and one desktop as above. This will give you a starting point to build your SMS install system package from. To do this, your package should include all files and sub-directories under c:\program files\riskappsV2\. Prior to do this you may want to edit each for the Microsoft Word Templates located in c:\program files\riskappsV2\templates\ to include your hospital or clinic name.

You may now proceed to install the tablet application on your tablet computers.

3. Tablet Application – Optional – only required if you will be using tablets

You will need to run the riskApps_250_Tablet_App_Setup.exe install file on each tablet application your patients will use to answer the family history survey.

- i. The install will ask you 3 questions:
 - i. Your Clinic Name
 - ii. Your SQL Server Name
 - iii. Your Database Name
- ii. Please provide answers to each question. If you have not renamed your database, please enter **bcDB2** for this value.
- iii. The installation will proceed.
- iv. If the .Net 2.0 framework is not on the desktop, the installation program will prompt you to download and install it prior to installing Hughes riskApps™.

- v. Once the installation is complete, test accessing the application. Login with:

Username: login

Password: login

If you are successful logging in you'll see an appointment list screen and a message that says there is no data on the server. This is correct and you have connected.

***You are now ready to proceed with setting up your definitions.
Please using the User's Guide to setup your site specific definitions.***